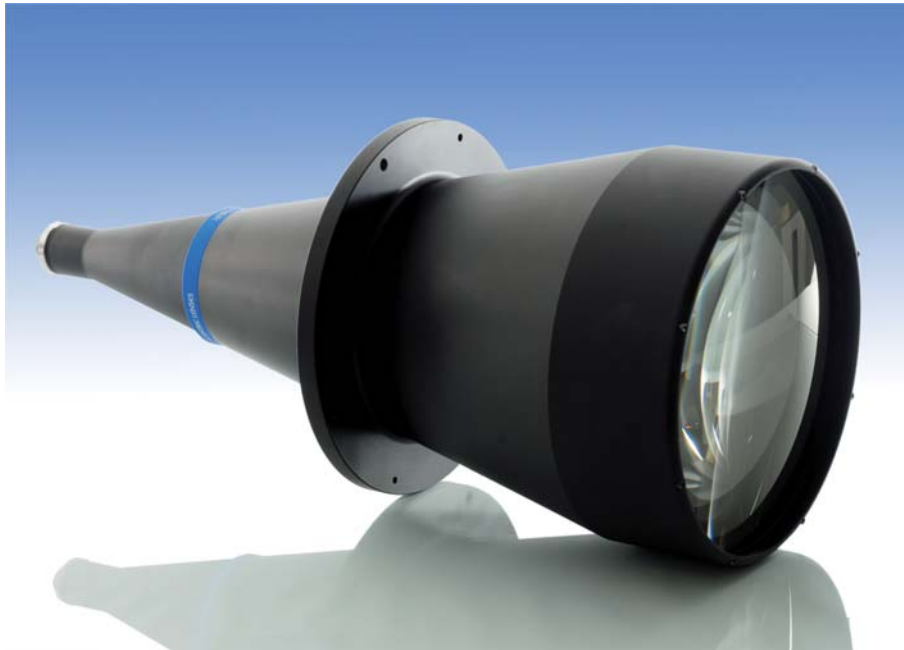




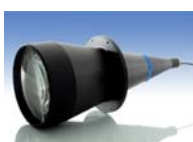
TC 23 200

0,044x Bi-Telecentric lens for detectors up to 2/3"



part number		TC 23 200
Magnification		0,044 +/- 3%
Field Of View		
with 1/4" (3,6 x 2,7) detector	(mm x mm)	82,5 x 61,9
with 1/3" (4,8 x 3,6) detector		110,0 x 82,5
with 1/2" (6,4 x 4,8) detector		146,7 x 110,0
with 1/1.8" (7,13 x 5,37) detector		163,3 x 123,0
with 2/3" (8,8 x 6,6) detector		201,6 x 151,2
Working Distance	(mm)	500,0 +/- 15
Working F-number		8
Telecentricity	(degree)	< 0,08
Distortion	(%)	< 0,1
Field Depth	(mm)	352,0
CTF @70 lp/mm	(%)	> 40
Image side N.A.		0,0620
Object side N.A.		0,0023
Mount		C
Length	(mm)	792,0
External diameter	(mm)	322,0
Weight	(g)	20000

ACCESSORIES AND OPTIONS:



Collimated/Telecentric illumination:

Compatible with LTCL240 illuminator;
green light suggested.

