



TC 23 144

0,06x Bi-Telecentric lens for detectors up to 2/3"



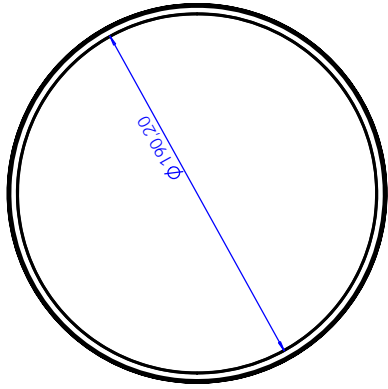
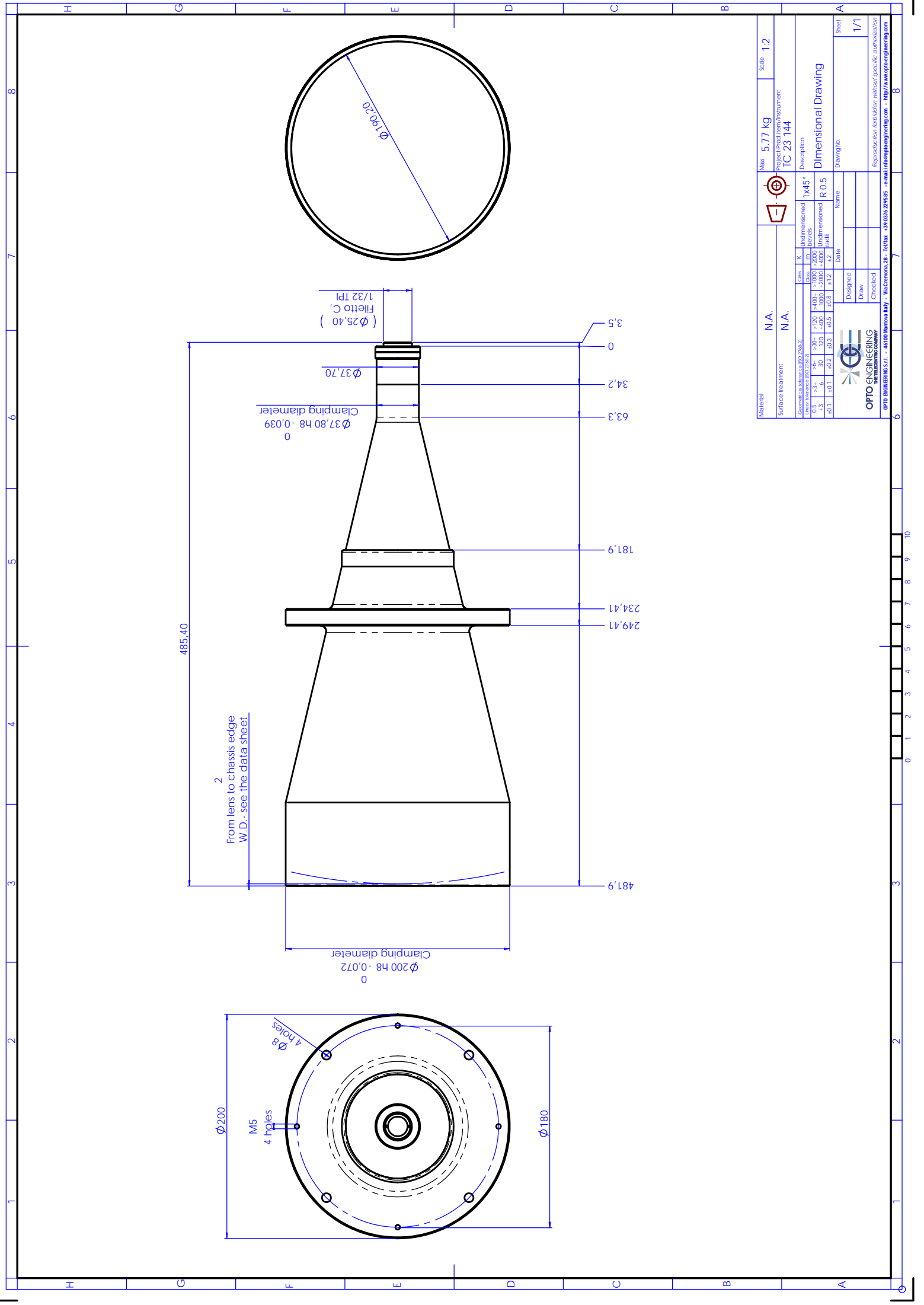
part number		TC 23 144
Magnification		0,061 +/- 3%
Field Of View		
with 1/4" (3,6 x 2,7) detector	(mm)	58,9 x 44,2
with 1/3" (4,8 x 3,6) detector		78,6 x 58,9
with 1/2" (6,4 x 4,8) detector		104,8 x 78,6
with 1/1.8" (7,13 x 5,37) detector		116,7 x 87,9
with 2/3" (8,8 x 6,6) detector		144,0 x 108,0
Working Distance	(mm)	398,0 +/- 12
Working F-number		8
Telecentricity	(degree)	< 0,08
Distortion	(%)	< 0,08
Field Depth	(mm)	180,0
CTF @70 lp/mm	(%)	> 40
Image side N.A.		0,0620
Object side N.A.		0,0038
Mount		C
Length	(mm)	481,9
External diameter	(mm)	200,0
Weight	(g)	5770

ACCESSORIES AND OPTIONS:



Collimated/Telecentric illumination:

Compatible with LTCL144 illuminator;
green light suggested.



Material	N.A.	Mass	5.77 kg	Scale	1:2
Surface treatment	N.A.	Project/Prod Item/Instrument	TC 23 144		
Geometrical tolerances (ISO 2046:8)		Indimensional	1x45°	Description	
Linear tolerance (ISO 2768:2)		Class	m	Dimensional Drawing	
0.1	-0.1	>0.1	>2000	Form dimensioned	R 0.5
0.3	-0.4	0.001	0.001	Profile	
0.1	0.1	0.02	0.02	Date	
				Designed	Name
				Draw	
				Checked	
				Sheet	1/1
OPTO ENGINEERING S.r.l. - 41030 Montebelluna (TV) - Via Cavour, 28 - Tel/Fax: +39 0423 259505 - e-mail: info@optoengineering.com - http://www.optoengineering.com					